



Sirius Series - Pyramid Top DECK LIGHTING

Fits	SKU	White	Almond	Black	Clay
4x4 VINYL Post	LV44HP__				
5x5 VINYL Post	LV55HP__				



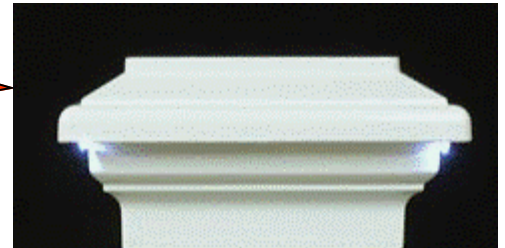
Titan Series - Flat Top

Fits	SKU	White	Almond	Black	Clay
4x4 VINYL Post	LV44HF__				
5x5 VINYL Post	LV55HF__				
6x6 VINYL Post	LV66HF__				

Nova LED Light - Flat Top



Fits	SKU	White ONLY
4x4 VINYL Post	LV44HN	



Nova lights feature four bright LED bulbs at corners of cap.

Orion Series - Flat Top

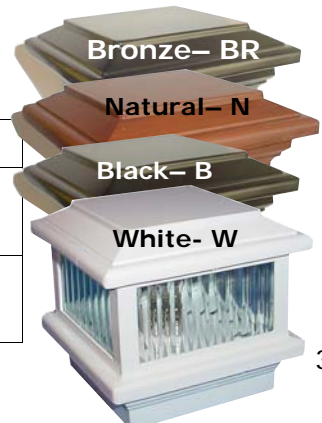


Fits	SKU	White ONLY
4x4 VINYL Post	LV44HO	
5x5 VINYL Post	LV55HO	



FOR WOOD & COMPOSITE POSTS

Fits	SKU	White	Colors
WOOD 3½ x 3½ post	LVW44HF-__		
COMPOSITE 4¾ x 4¾ post	LVC44HF-__		
WOOD 5½ x 5½ post	LVW66HF	White ONLY	



All lights on this page require 12 volt transformer & wiring

POLARIS Solar

Aurora DECK LIGHT -

Auto ON at Dusk
NO TRANSFORMER
NO WIRES



4x4

5x5

	Part#	White	Almond	Clay
4X4 POLARIS Solar Cap	LV44HS			
5x5 POLARIS Solar Cap	LV55HS			

Note about SOLAR caps:

Solar caps give off a soft bluish light from their LED bulbs. They will burn for 4 to 5 hours after a full charge on a summer day. Burn times are significantly shorter during the winter months.

Pegasus Solar LED Light

Battery powered, no wiring required. Four LED bulbs provides a soft accent to the post or rail. Illuminates at corners of cap.



Fits	SKU	White ONLY
4x4 VINYL Post	LV44HSP	



6" Cambridge Solar Cap

- Battery powered, no wiring required.
- Fits a 6x6 Vinyl Sleeve
- Made of Vinyl

Fits	SKU	White ONLY
6x6 VINYL Post	LV66CS	

Pathway and Stair Lighting

Adds ambience and safety to stairs and walkways.

	White	Colors
Nebula Eyeball Light	LVNE-__	



Protrudes 2" out from post.

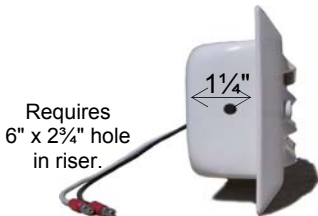
Half Round Post

Nebula & Pyxis

Lights Available in
White, Black, Bronze
Natural Brown, Metallic Copper



Now with Led Bulbs



Requires 6" x 2 1/4" hole in riser.

18 Watt

Recessed Riser Light

7 1/4" x 3 3/4" Front Cover

	White	Colors
Pyxis Recessed Riser Light	LVPR-__	

For special order items, see pages 73-78.

For special order items, see pages 73-78.

Aurora

Decorative Caps for

WOOD POSTS

Sirius - Pyramid Top

Pyramid Top

Available for
3½ x 3½ & 5½ x 5½
wood posts

Titan - Flat Top

Flat Top

Available for
3½ x 3½ & 5½ x 5½
wood posts

White- W

Bronze- BR

Natural- N

Black- B

		White	Black	Natural	Bronze
4X4 Sirius Pyramid wood post cap	W44PCAP-___				
4X4 Titan Flat wood post cap	W44FCAP-___				
6X6 Sirius Pyramid wood post cap	W66PCAP-___				
6X6 Titan Flat wood post cap	W66FCAP-___				

Weatherproof Cast Aluminum Caps

Designed to match the profiles of the Aurora Lighted Caps for vinyl posts.

		White	Black
Titan Flat cap for 4x4 VINYL post	V44FCAP-___		
Titan Flat cap for 5x5 VINYL post	V55FCAP-___		
Sirius Pyramid cap for 4x4 VINYL post	V44PCAP		
Sirius Pyramid cap for 5x5 VINYL post	V55PCAP		

Titan - Flat Top

Sirius - Pyramid Top

To see more options visit:

www.auroradecklighting.com

For special order items, see pages 73-78.

Transformers, Wire, & Parts For Lighted Post Caps

What size transformer do I need?

Its easy! Just take the number of lights, multiplied by the wattage of the bulb. That's the minimum wattage rating of transformer you should use! (Note: 6x6 Hampton lights are 54 watts each!)

LED lights are 1 watt each

Example:

16 **Aurora** lights X 18 watts = 288 watts , so then use the LV300XF, 300 watt transformer.

A	12 volt, 88 watt transformer w/timer	LV88XF
	12 volt, 120 watt transformer w/timer	LV121XF
	12 volt, 200 watt transformer w/timer	LV200XF
	12 volt, 300 watt transformer w/timer	LV300XF
	12 volt, 600 watt transformer w/timer	LV600XF



LED Light Bulbs

B	100' roll 12 gauge wire	LV10012
----------	--------------------------------	---------

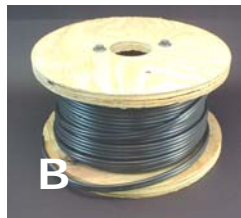
Warm
Bulb puts off a "yellowish" glow and resembles a incandescent bulb.

LVBULB-W

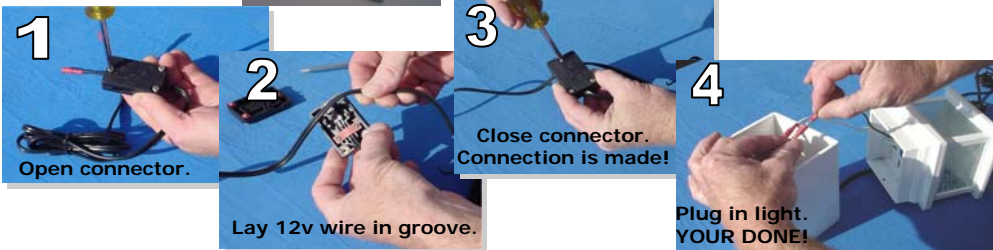
C	60" Connection Pig-Tail Order one per light.	LVH01
----------	---	-------

Cool
Bulb puts off a "bluish" color.

LVBULB-C



60" Connection Pig-Tail



**Makes Installation Easy!
NO cutting.**

